



You'll find "Sahara" in our heifer pens with her Top 500 genotyped cousins,
"Legal Sammie," GJPI +182 and "Lyndon Sydney" GJPI +150:

Wilsonview AI Sahara, P9 #1 genotyped female of the breed, GJPI +233

Born: September 11, 2010 USDA: GPTA (3/11 GT3K) 54%R +1,483M, +79F, +55P, +\$649CM, +\$603NM, +575FM

Sire: Forest Glen Artist Alexander

Dam: **GR Wilsonview Garden Sochi-ET, VG-86%**

Projected to 20,915-1,046-736 ME at 1-11

USDA: GPTA (3/11 GT3K) 57%R +1,431M, +58F, +45P

+\$496CM, +\$486NM, +489FM **GJPI +190**

Ranks 5th for GJPI among genotyped cows



Wilsonview Impulse Shauna, E-93%

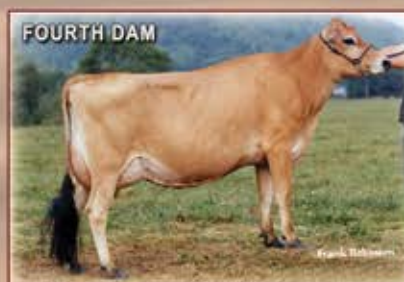
4-3 305 19,000 5.1% 974 4.0% 757 102DCR

- Ranks on the Top 1½% GJPI Cow List (GJPI +126 3/11)
- She has five daughters ranked on the March Top 500 genotyped female list
- Three "PR Dale" sons in A.I.: GR SEAN at ABS Global; GR STRAUGHTER at Semex; and GR SPRITZER at Select Sires.
- She has a "Champ" son going to Sexing Technologies and a "Merchant" son going to Alta Genetics.

The third dam is a "Hallmark" that we lost as a two year old.

Her maternal sister: **Wilsonview Jace Sunny-ET, E-90%**

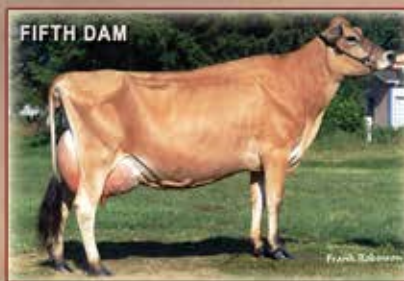
5-6 305 20,560 4.9% 1,008 3.8% 776 102DCR



Wilsonview Centurion Sarah-ET, E-90%

2-4 305 18,000 4.5% 811 3.5% 635 100DCR

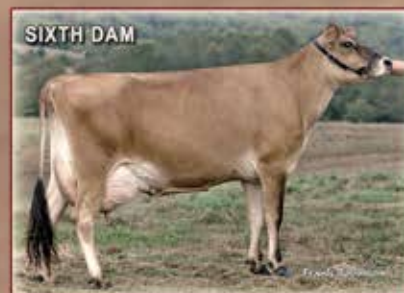
- Dam of three Excellent daughters



Wilsonview Lester Sage-ET, E-92%

3-5 305 20,630 4.0% 835 3.4% 710 DHIR

- Dam of four Excellent daughters



Coelhos Sooner Sadie, E-90%

5-8 305 23,750 4.0% 939 3.4% 800 DHIR

- Dam of four Excellent daughters

Wilsonview Dairy, Inc. THE JOSI FAMILY

Visit us online at: <http://wilsonview.usjersey.com> REAP

2540 Olsen Rd. North, Tillamook, OR 97141 • 503/842-4516 (Don)
503/815-2601 (Derrick) • Email: josi@oregoncoast.com