



Magnificent "Ms"

Our National Heifer Sale consignment comes from the same maternal line as the #1 Active A.I. bull, MAGNUM. Get ready for high PLANES on the high PLAINS with this top heifer selling June 29:

WILSONVIEW MEDAL MILAN-ET, P9^{JHIF}

Born: August 11, 2012 • Sire: Sunset Canyon Medalist-ET
 USDA: GPTA 5/13 8K 59%R +936M, +57F, +45P, +567CM,
 +\$496NM, +\$443FM, +4.1 PL, Type +2.1, GJPI +207

Ranks on the Top 500 GJPI Heifer List

DAM: **Wilsonview TBone Milestone-ET, VG-86%**

1-9 305 17,550 5.2% 907 3.7% 653 101DCR
 Top 1.5% for GJPI at +171 • Pictured above

GRANDAM: **Impulsive Moment at Wilsonview-ET, VG-88%**

6-0 305 26,970 4.0% 1,087 3.3% 891 102DCR
 Top 1.5% for GJPI at +173

Dam of four sons in A.I. including 14JE539 MADDIX

THE NEXT SIX DAMS: E-93% "Avery" with 23,110M; E-93% "Brook" with 22,980M; E-90% "Sky Line" with 20,290M; VG-84% "Brigadier" with 27,290M; E-92% "Legend" with 17,830M; and an E-92% "Saint" with 21,610M.

BULLS AVAILABLE FROM THIS FAMILY: "Milestone" sons by "Fastrack," GJPI +208 and two "Irwin's" GJPI +205 and +199; "McKenna" son by "Marvel," GJPI +204; and two sons of "McKayla" sired by "Sebastian," GJPI +208 and "Perform," GJPI +217.

Wilsonview Dairy, Inc. THE JOSI FAMILY

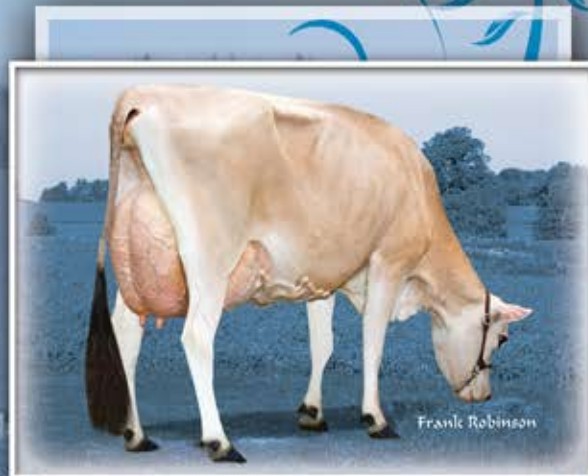


Visit us online at: <http://wilsonview.usjersey.com>

2540 Olsen Rd. North, Tillamook, OR 97141



503/842-4516 (Don) 503/815-2601 (Derrick) Email: josi@embarqmail.com



MATERNAL SISTER TO DAM

Wilsonview N McKenna-ET, E-90%

1-10 305 16,470 5.1% 835 3.7% 612 101DCR
 Top 1.5% for GJPI at +153



MATERNAL SISTER TO DAM

Wilsonview N McKayla-ET, VG-87%

1-11 305 16,890 4.9% 836 3.6% 606 101DCR
 Top 1.5% for GJPI at +195



Also selling in Texas:

WILSONVIEW VISIONARY JACEE, P9^{JHIF}

A March 2013 "Visionary" daughter with a GJPI of +172. Her dam is an Excellent "Parade Louie" with 19,930M, 933F, 763P actual at 3-2. The grandam is a VG-88% "Maximus" followed by a VG-88% "Jace."