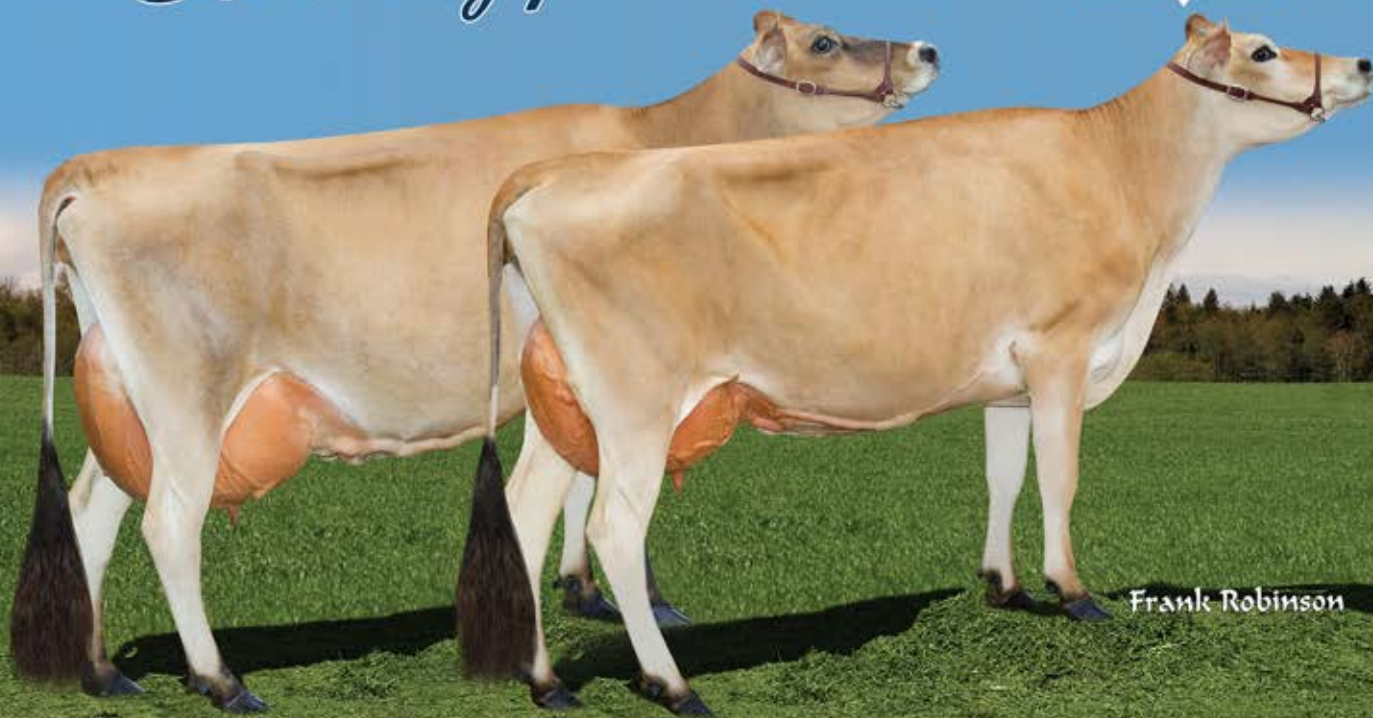


# BULL MOTHERS

*A strong partnership* WITH



Frank Robinson

## GR Wilsonview Garden Sochi-ET

**Excellent-91%**

3-4 305 22,630 4.6% 1,047 3.6% 806 102DCR  
 Top 1.5% for GJPI among cows at +196

Her son at ABS Global:

**29JE3832 SPENCER** GJPI +174

His full sister: **Wilsonview Ren Sonia-ET, VG-80%**  
 Projected to 18,505—924—575 ME at 1-10 • GJPI +184

## Wilsonview N McKayla-ET

**Excellent-91%**

3-5 305 20,670 4.7% 980 3.4% 706 102DCR  
 Sire: 29JE3452 NAVARA

Her son at ABS Global:

**29JE3917 McMILLION** GJPI +204 JUI +5.49

Her full brother at ABS Global:

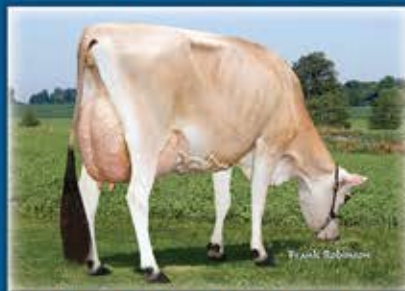
**29JE3730 McARTHUR** GJPI +127

*ABS influence—full sisters to “McKayla”*



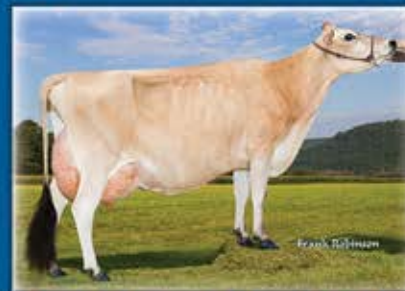
**Wilsonview McKenzie-ET, E-90%**

3-0 305 19,650 4.7% 921 3.5% 687 102DCR



**Wilsonview N McKenna-ET, E-90%**

3-0 305 19,510 4.6% 891 3.4% 666 102DCR



**Wilsonview Navarra Moment-ET, E-91%**

2-11 305 17,660 5.1% 892 3.5% 625 102DCR

*Wilsonview Dairy, Inc.*

THE JOSI FAMILY

Visit us online at: <http://wilsonview.usjersey.com>

2540 Olsen Rd. North, Tillamook, OR 97141  
 503/842-4516 (Don) 503/815-2601 (Derrick)  
 Email: [josi@oregoncoast.com](mailto:josi@oregoncoast.com)

